



BAHAMAS DEPARTMENT OF METEOROLOGY
Forecast Office Section
Telephone No. 377-7178/377-7040
Fax No. 377-5275
Nassau, Bahamas

ALERT #23 ON TROPICAL STORM ETA ISSUED BY THE BAHAMAS DEPARTMENT OF METEOROLOGY, SUNDAY 8TH NOVEMBER, 2020, AT 2PM EST.

**...ETA MOVING NORTH-NORTHWESTWARD OVER THE FLORIDA STRAITS...
EXPECTED TO PRODUCE DANGEROUS STORM SURGE, FLASH FLOODS AND
STRONG WINDS OVER PORTIONS OF CUBA, FLORIDA, AND THE FLORIDA KEYS...**

**...ETA WILL PRODUCE STRONG WINDS OVER THE NORTHWEST BAHAMAS, AND
HEAVY RAIN AND LOCALIZED FLOODING OVER THE ENTIRE BAHAMAS TODAY...**

**A TROPICAL STORM WARNING REMAINS IN EFFECT FOR THE NORTHWEST
BAHAMAS. THIS INCLUDES THE ISLANDS OF GRAND BAHAMA, ABACO, BIMINI,
BERRY ISLANDS, ANDROS, NEW PROVIDENCE AND ELEUTHERA**

**A TROPICAL STORM WARNING MEANS THAT TROPICAL STORM CONDITIONS
COULD BE EXPERIENCED IN SOME OR ALL OF THE MENTIONED ISLANDS WITHIN
36 HOURS.**

**A TROPICAL STORM ALERT REMAINS IN EFFECT FOR THE ISLANDS OF THE
CENTRAL BAHAMAS. THIS INCLUDES THE ISLANDS OF EXUMA, CAT ISLAND, LONG
ISLAND, SAN SALVADOR AND RUM CAY.**

**A TROPICAL STORM ALERT MEANS THAT TROPICAL STORM CONDITIONS COULD
BE EXPERIENCED IN THE MENTIONED ISLANDS WITHIN 60 HOURS.**

**AT 1 PM EST, THE CENTER OF TROPICAL STORM ETA WAS LOCATED NEAR
LATITUDE 23.5 DEGREES NORTH AND LONGITUDE 79.2 DEGREES WEST, OR ABOUT
145 MILES SOUTHEAST OF MARATHON FLORIDA, OR ABOUT 170 MILES SOUTH
SOUTHEAST OF MIAMI FLORIDA, OR ABOUT 110 MILES WEST-SOUTHWEST OF
KEMPS BAY ANDROS, OR ABOUT 150 MILES SOUTHWEST OF NEW PROVIDENCE, OR
ABOUT 155 MILES SOUTH OF ALICE TOWN BIMINI, OR ABOUT 210 MILES SOUTH OF
FREEPORT GRAND BAHAMA.**

**ETA IS MOVING TOWARD THE NORTH-NORTHEAST NEAR 17 MPH (28 KM/H), AND THIS
MOTION IS FORECAST TO CONTINUE THROUGH THIS AFTERNOON. A TURN TOWARD
THE NORTHWEST IS EXPECTED BY THIS EVENING, FOLLOWED BY A WESTWARD
MOTION BY EARLY MONDAY.**

**ON THE FORECAST TRACK, THE CENTER OF ETA WILL CONTINUE TO MOVE OVER THE
FLORIDA STRAITS BETWEEN CUBA AND THE BAHAMAS THIS AFTERNOON, PASS NEAR
OR OVER THE FLORIDA KEYS TONIGHT AND EARLY MONDAY, AND OVER THE
SOUTHEASTERN GULF OF MEXICO LATE MONDAY AND TUESDAY.**

**MAXIMUM SUSTAINED WINDS HAVE INCREASED TO NEAR 65 MPH (100 KM/H) WITH
HIGHER GUSTS. SOME STRENGTHENING IS FORECAST DURING THE NEXT 48
HOURS, AND ETA IS FORECAST TO BECOME A HURRICANE BEFORE IT REACHES
THE FLORIDA KEYS TONIGHT.**

**TROPICAL STORM FORCE WINDS EXTEND OUTWARD UP TO 125 (205 KM/H) MILES
FROM THE CENTER.**

**TROPICAL STORM CONDITIONS ARE PRESENTLY OCCURRING IN ANDROS AND IS
SPREADING INTO NEW PROVIDENCE AND BIMINI. GRAND BAHAMA WILL BEGIN TO**

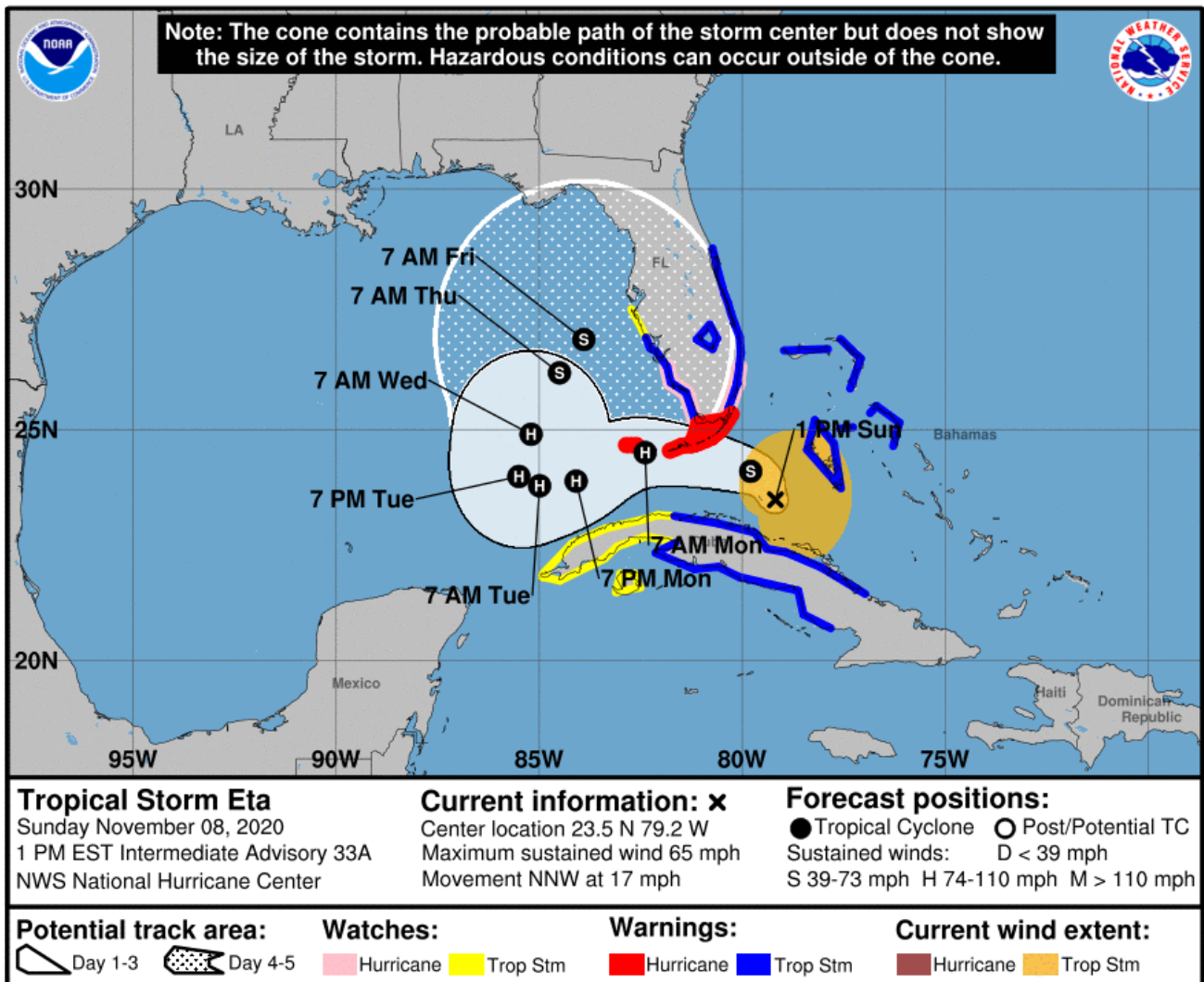
EXPERIENCE TROPICAL STORM CONDITIONS BY 7PM TONIGHT. THESE CONDITIONS ARE EXPECTED TO SUBSIDE BY MIDNIGHT TONIGHT OVER ANDROS AND NEW PROVIDENCE, AND OVER GRAND BAHAMA AND BIMINI BY EARLY MONDAY MORNING. ADDITIONAL RAINFALL AMOUNTS OF 4 TO 8 INCHES WITH ISOLATED MAXIMUM TOTALS OF 15 INCHES ARE FORECAST FOR THE BAHAMAS THROUGH THURSDAY.

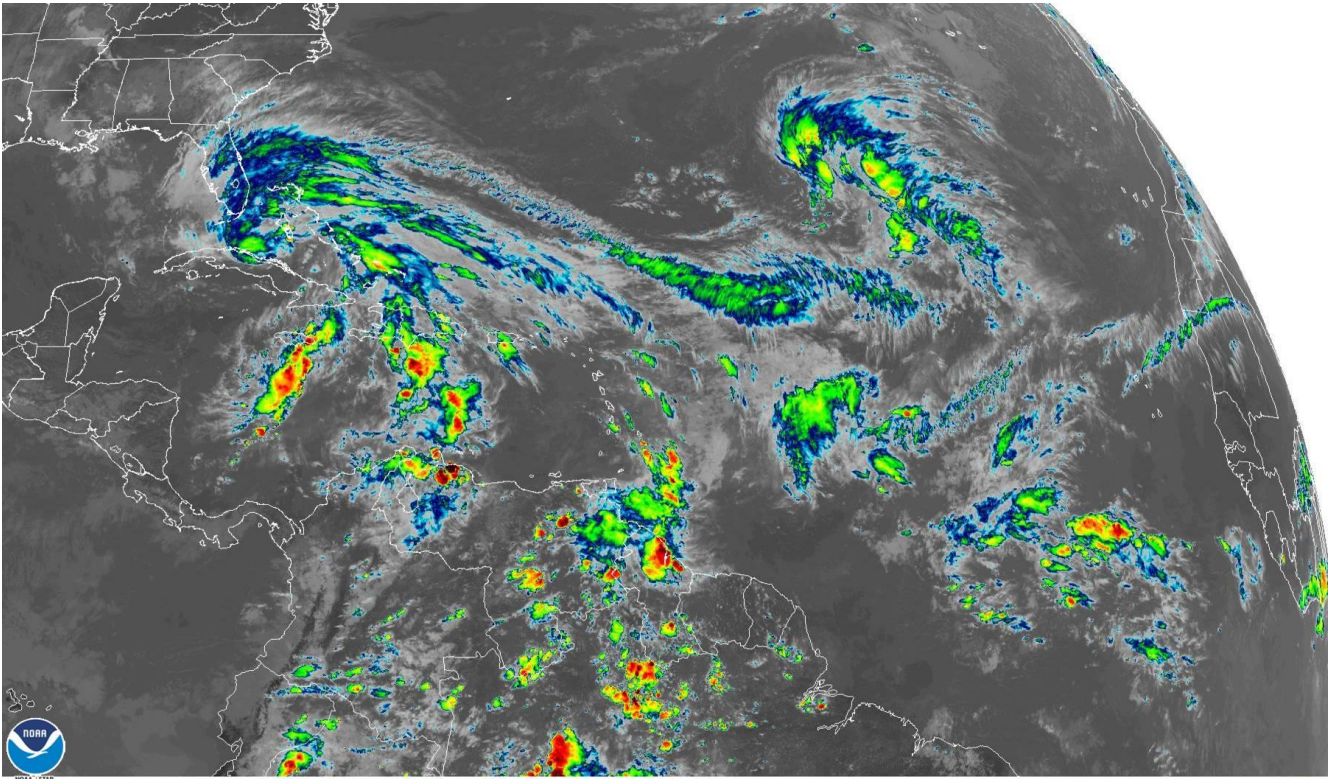
BOATERS IN THE NORTHWEST AND CENTRAL BAHAMAS ARE ADVISED TO REMAIN IN PORT AS ETA IS EXPECTED TO PRODUCE DANGEROUS SWELLS THROUGH WEDNESDAY.

RESIDENTS IN THE NORTHWEST BAHAMAS SHOULD HAVE COMPLETED PREPARATIONS FOR TROPICAL STORM CONDITIONS AND LOCALIZED FLOODING IN LOW-LYING AREAS. RESIDENTS AND INTERESTS IN THE CENTRAL AND SOUTHEAST BAHAMAS SHOULD CONTINUE TO CLOSELY MONITOR ALERTS ISSUED BY THE DEPARTMENT OF METEOROLOGY ON ETA.

THE NEXT ALERT ON TROPICAL STORM ETA WILL BE ISSUED AT 5PM EST SUNDAY 8TH NOVEMBER 2020.

**ISSUED BY: MARY BUTLER
(for) DIRECTOR**





08 Nov 2020 18:20Z NOAA/NESDIS/STAR GOES-East Band 13